

SHARED INTEREST



Moving Forward Together



SEPTEMBER 2017

WE WILL BE CLOSED

**Monday,
October 9th**



in recognition
of Columbus Day.

As always, you have access to your accounts 24/7 with SELCCU Online (www.SELCCU.org) & Touch-Tone Teller (440-324-2445/ 800-850-4539)

APPLICATION AVAILABLE ONLINE NOW

2017 Mini-Grant
for educators

Every year SELCCU awards four mini-grants up to **\$250 each** to educators from preK-12 classrooms in Lorain County. They are meant to assist teachers who may not have funding or other resources for creating **innovative** and **educational** classroom experiences.

Please visit www.SELCCU.org for additional information on funding criteria and to access the application.

DEADLINE IS OCTOBER 31ST.

TRAVELING? AWAY AT COLLEGE?



*Includes hundreds of CO-OP Shared Branch express self-service locations.

You now have access to the second largest branch network in the nation with Shared Branching!

www.co-opcreditunions.org/locator

SELCCU GIVES BACK

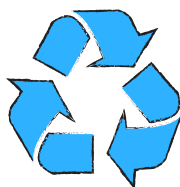
BAKE SALE



**FRIDAY SEPTEMBER 15TH
SATURDAY SEPTEMBER 16TH**

Stop in our Elyria or Lorain office all day for a delicious treat! Proceeds will benefit Lorain County Veterans.

**Local & Secure
DOCUMENT SHREDDING**



Did you miss our annual Shred-It Day this past June and still need a safe way to shred your confidential documents? Check out a few of these local document shredding services:

• **Lorain County Collection Center**

540 Abbe Rd Elyria, OH
Monday & Wednesday 12:00pm-6:00pm
Saturday 9:00am-12:00pm

They do not shred when you drop off. Materials are locked in carts. They shred every Thursday.

- Lorain County Residents only, proof of residency **required**.
- Residential records only, **NO BUSINESSES!**
- No magazines or periodicals.
- Limit five grocery bags.

• **Select Marc's Locations**

Visit their website or a Customer Service Desk to see which locations participate.

- No cost!
- Limit 25lbs

**DID YOU
KNOW...?**



With Secure Checking's IDProtect you receive up to \$10,000 as a fraud reimbursement expense to help pay for expenses if you've been a victim of identity theft. This includes things such as reimbursement for costs associated with attorney fees, loan application fees, long distance calls, certified mail, notarized fraud documents, medical record costs, as well as coverage for wages lost for time taken off work to help correct personal records. Login to your account at www.SecureChecking.com and visit the Recovery, Resolution and Identity Management Program to learn more about this feature.

Find us on social media!



Main Office: 340 Griswold Road Elyria, Ohio 44035

440-324-3400 or 1-800-451-6315

Lorain Branch: 4459 Oberlin Avenue Suite 101 Lorain, Ohio 44053

440-282-4600 or 1-800-451-6315

www.SELCCU.org

YOUR SAVINGS INSURED TO \$500,000 PER ACCOUNT



Your deposit accounts in this credit union are each insured up to \$500,000 through a combination of \$250,000 of primary deposit insurance from American Share Insurance and \$250,000 of additional insurance provided by Excess Share Insurance Corporation.

This institution is not federally insured.
MEMBERS' ACCOUNTS ARE NOT INSURED OR GUARANTEED BY ANY GOVERNMENT OR GOVERNMENT-SPONSORED AGENCY.

